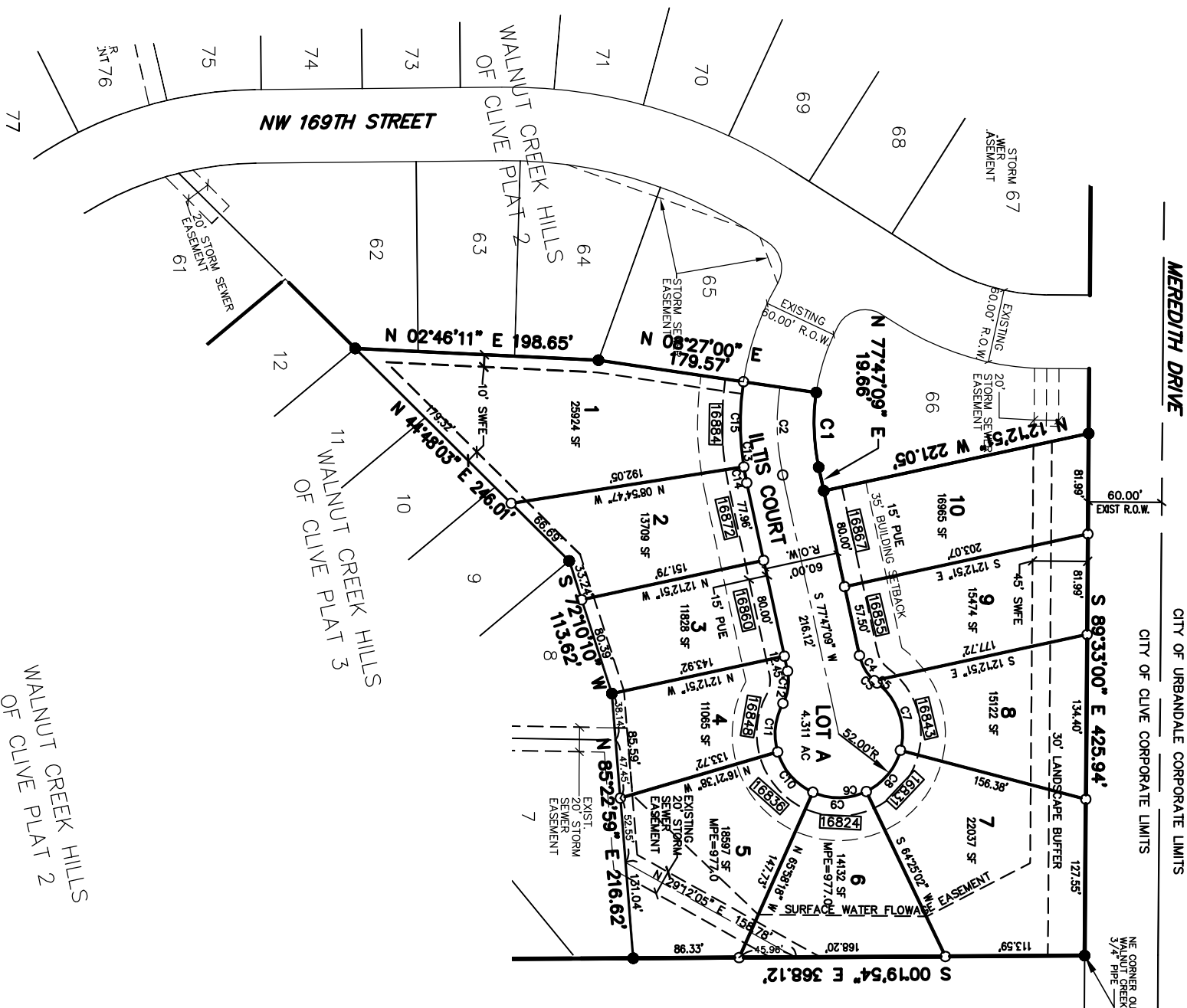


FINAL PLAT
WALNUT CREEK HILLS OF CLIVE PLAT 4
 SHEET 1 OF 1



WALNUT CREEK HILLS
 OF CLIVE PLAT 2

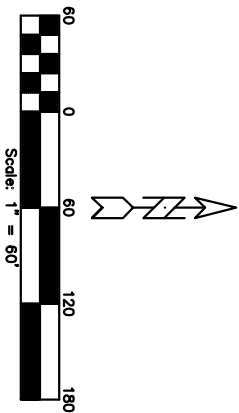
WALNUT CREEK HILLS
 OF CLIVE PLAT 3

WALNUT CREEK HILLS
 OF CLIVE PLAT 4

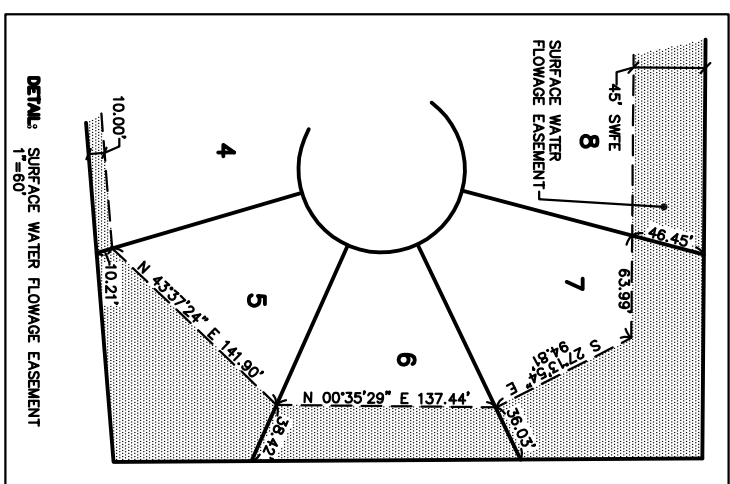
- LEGEND**
- ▲ SECTION CORNER MONUMENT (AS NOTED)
 - MONUMENT FOUND (5/8" REBAR W/CAP #15288, UNLESS NOTED)
 - MONUMENT SET (5/8" REBAR W/CAP #15288)
 - RIGHT-OF-WAY
 - PUBLIC UTILITY EASEMENT
 - STREET ADDRESS NO.
 - M.P.L.E.
 - MINIMUM PROTECTION ELEVATION
 - SURFACE WATER FLOWAGE EASEMENT

CURVE DATA

NUMBER	DELTA ANGLE	CHORD DIRECTION	RADIUS	ARC LENGTH	CHORD LENGTH
C1	20°39'51"	N 88°07'05" E	170.00	61.31	60.98
C2	20°39'51"	N 88°07'05" E	200.00	72.13	71.74
C3	40°55'34"	N 57°19'22" E	38.00	27.14	26.57
C4	36°18'00"	N 59°38'09" E	38.00	24.08	23.67
C5	04°37'34"	S 39°10'22" W	38.00	3.07	78.58
C6	26°15'108"	S 12°12'51" E	52.00	12.87	3.07
C7	67°36'48"	S 70°49'59" W	52.00	61.87	58.12
C8	49°36'40"	S 50°23'18" E	52.00	45.03	43.63
C9	49°36'40"	N 00°46'38" W	52.00	45.03	43.63
C10	49°36'40"	N 48°50'02" E	52.00	40.91	43.63
C11	45°04'21"	S 83°49'28" E	38.00	27.14	26.57
C12	40°55'34"	N 81°45'04" W	38.00	27.14	26.57
C13	20°39'51"	S 88°07'05" W	230.00	82.95	82.50
C14	03°18'04"	S 79°28'11" W	230.00	13.25	13.25
C15	17°21'48"	S 89°46'07" W	230.00	69.70	69.43



- NOTES**
1. LOT "A" IS HEREBY DEDICATED TO THE CITY OF CLIVE, IOWA FOR PUBLIC RIGHT-OF-WAY.
 2. SOME LOTS HAVE A MINIMUM PROTECTION ELEVATION (MPE) REQUIREMENT. THE ELEVATIONS SHOWN WITHIN THE LOTS ARE BASED ON CALCULATIONS MADE BY THE PROJECT ENGINEER. THE SURVEYOR CANNOT CERTIFY TO ENGINEERING CALCULATIONS AND DOES NOT CERTIFY TO THE ACCURACY OR CORRECTNESS OF THE ELEVATIONS SHOWN.
- LEGAL DESCRIPTION**
- OUTLOT "X" IN WALNUT CREEK HILLS OF CLIVE PLAT 2, AN OFFICIAL PLAT NOW INCLUDED IN AND FORMING A PART OF THE CITY OF CLIVE, DALLAS COUNTY, IOWA, CONTAINING 4.311 ACRES.
- ZONING / SETBACKS**
- R-1 / FRONT = 35'
 REAR = 35'
 SIDE = 8'



LAND SURVEYOR CERTIFICATION

I HEREBY CERTIFY THAT THIS LAND SURVEYING DOCUMENT WAS PREPARED AND THE RELATED SURVEY WORK WAS PERFORMED BY ME OR UNDER MY DIRECT PERSONAL SUPERVISION AND THAT I AM A DULY LICENSED LAND SURVEYOR UNDER THE LAWS OF THE STATE OF IOWA.

DANIEL F. RITTEL, P.L.S. #16288
 MY LICENSE RENEWAL DATE IS DECEMBER 31, 2007 DATE
 PAGES OR SHEETS COVERED BY THIS SEAL.

SPACE RESERVED FOR RECORDER'S USE

PREPARED FOR / OWNER

WALNUT CREEK HILLS LAND COMPANY
 2171 GRAND AVENUE
 WEST DES MOINES, IA 50265
 (515) 440-6257

FINAL PLAT - WALNUT CREEK HILLS OF CLIVE PLAT 4

NO.	REVISION	DATE	BY	FOR:	LOCATION:	SCALE:	DESIGNED BY:	DRAWN BY:
						1" = 60'	DJS	TEB

ERG
 Engineering Resource Group, Inc.
 Engineers and Surveyors
 2413 GRAND AVENUE
 DES MOINES, IOWA 50312
 (515) 288-4823